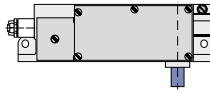


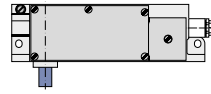
# AIDE AU CHOIX

VERSION

R (droite)

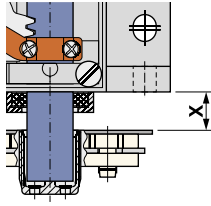


L (gauche)



COTE X (MM)  
LONGUEUR PÊNE

Mesure entre serrure et chant de porte ( $X \geq 5$  mm)

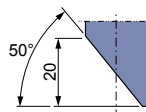


PÊNE

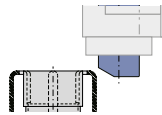
(ANS 0) (standard DL)



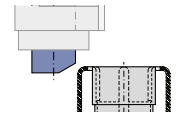
(ANS 1)



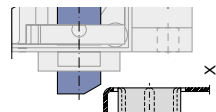
(u) (en bas côté fond)



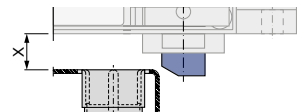
(o) (en haut côté couvercle)



(a) (extérieur)



(i) (intérieur)

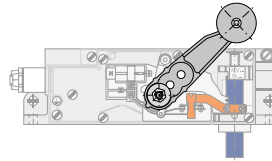


TYPE DE  
DÉVERROUILLAGE

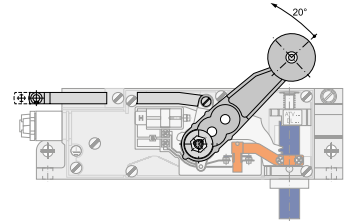
.10 (actionnement par barre de traction)



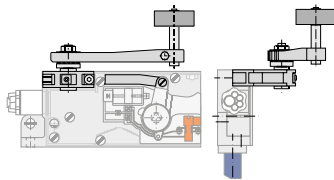
.20 (parallèle)



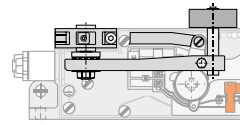
.30 (levier à galet vissé et barre de traction)



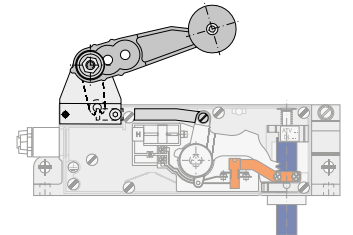
.40 (perpendiculaire)



.40/180 (perpendiculaire retourné)



.50 (actionnement par levier à galet annexe  
parallèle à l'axe du loquet du pêne)

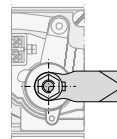


DÉVERROUILLAGE  
DE SECOURS

.1 (côté couvercle sur l'axe de palier)

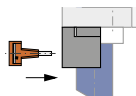


.5 (côté couvercle avec levier)

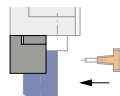


CONTACT DE PORTE

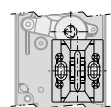
.6 (actionnement par côté fond)



.7 (actionnement par côté couvercle)

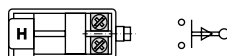


.8 (Contact positif transitoire RZ)

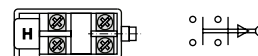


CONTACT  
AUXILIAIRE

.9/01 (1NC installé)



.9/02 (2NC installés)



.9/11 (1NC et 1NO installés)

